

Ash Pond Dewatering

This diagram outlines the wastewater treatment process being implemented at Alabama Power facilities. These systems provide enhanced treatment of wastewater during the dewatering process.

Words to Know: Dewatering - Removal of ponded water from the ash pond.

4. SETTLING

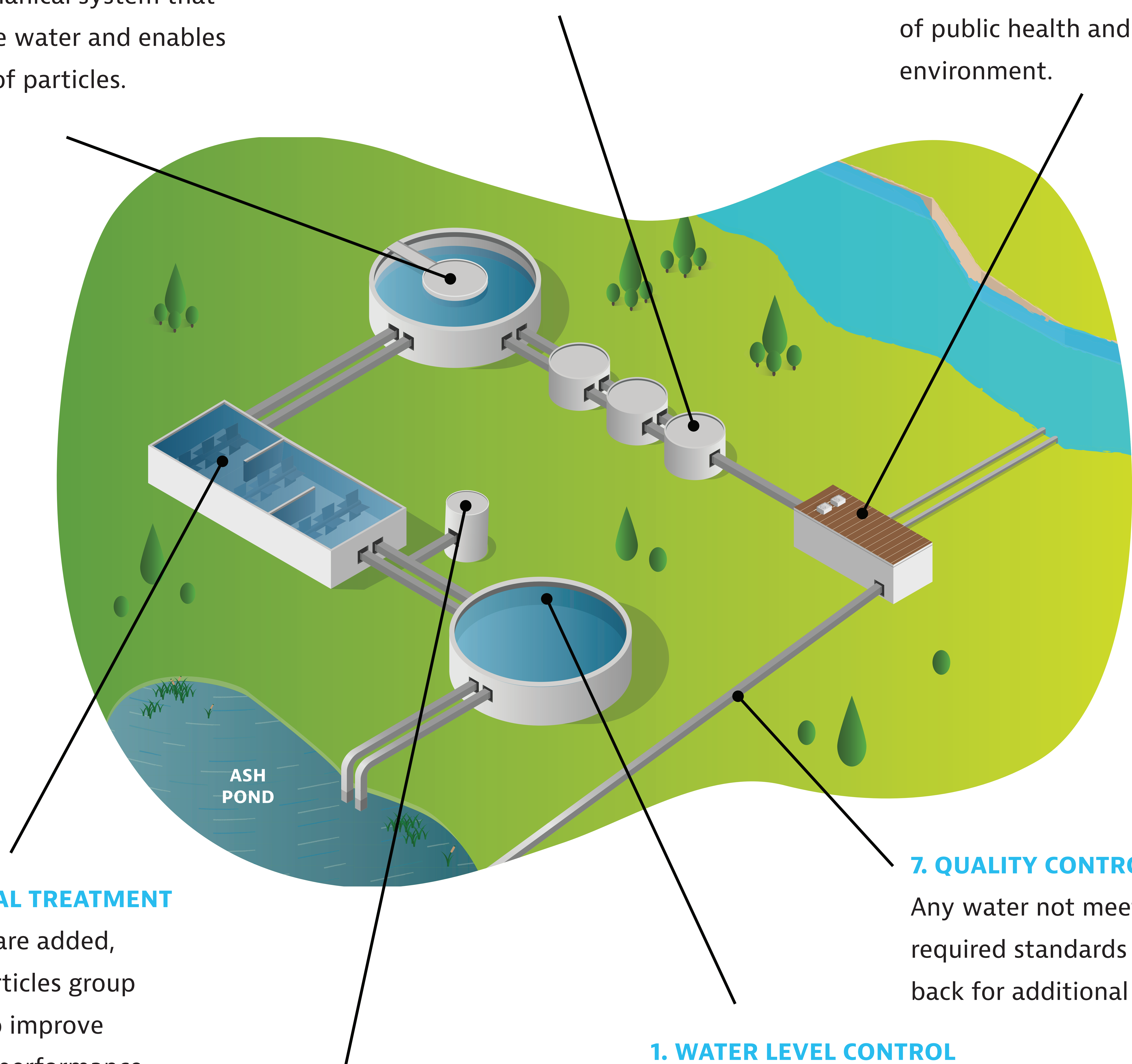
Particles are removed through clarification. This is a mechanical system that slows the water and enables settling of particles.

5. FILTRATION

Final polishing step on a site-by-site basis, as needed, to further reduce particles.

6. MONITORING

Continuous monitoring is performed to ensure that the discharge is protective of public health and the environment.



3. CHEMICAL TREATMENT

Chemicals are added, helping particles group together to improve treatment performance.

2. PH ADJUSTMENT

pH adjustment is performed to neutralize the incoming wastewater and facilitate improved treatment.

1. WATER LEVEL CONTROL

Flow equalization is performed to control water volume being sent to the treatment system. This allows for consistent and efficient system operation.

7. QUALITY CONTROL

Any water not meeting the required standards is recycled back for additional treatment.