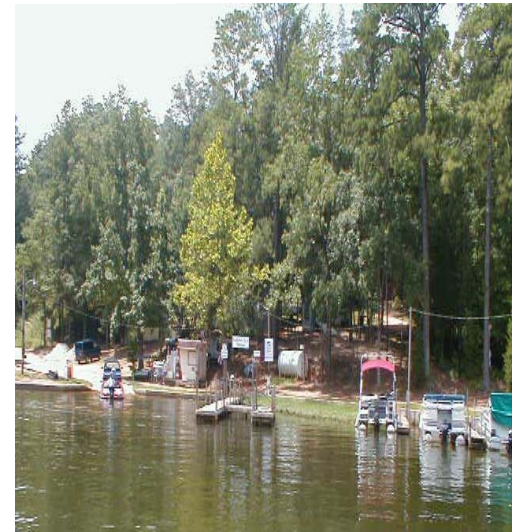


Coosa - Warrior Relicensing



Recreation IAG Update

November 13, 2002

Recreation IAGs

A scenic view of a lake with a forested hillside in the background and a long building with a covered dock area on the far shore. The sky is overcast with grey clouds. The water is calm with some ripples. The buildings on the shore are mostly white with dark roofs, and there are some trees in front of them.

Weiss

Henry

Logan Martin

Lay

Mitchell

Jordan/Bouldin

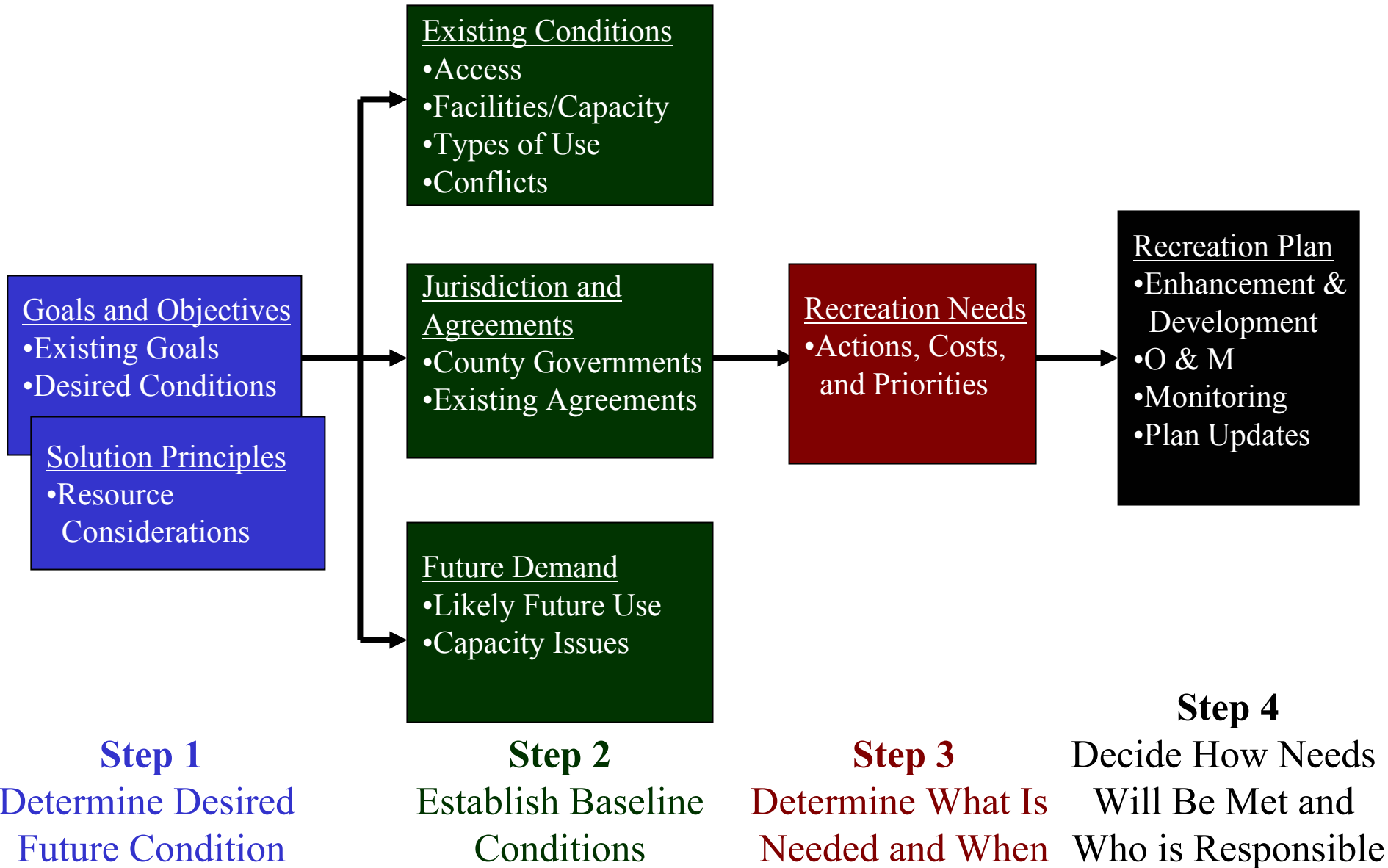
Smith

Issue Statements

- ❑ R1 Recreation Management
- ❑ R2 Public Safety
- ❑ R3 Lake Level Fluctuations
- ❑ R4 Downstream Flows
- ❑ R5 Flood Control

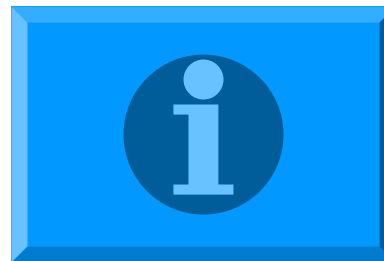


Recreation IAG Standard Process



Standard Tracking Questions & Documents

- ❑ Standard Document for all Rec IAGs
- ❑ Record of IAGs discussions and any recommendations



IAG Accomplishments

- ❑ Vision Statements
- ❑ Baseline Information
 - Recreation Maps & Use Numbers
- ❑ Tracking Documents
- ❑ Issue Specific Recommendations
- ❑ Conceptual Site Plans



Weiss, Henry, Logan Martin, Lay

- ❑ Improve Bank Angler Access and Facilities
- ❑ Enhance and Expand Existing Facilities
- ❑ Address
 - Lake Level Fluctuations
 - Weiss Bypass Opportunities
 - Sedimentation
 - Public Safety



Mitchell

- ❑ Existing Site Improvements
- ❑ Enhance Primitive Recreation Opportunities
- ❑ Investigate Potential New Recreation Facilities

Balance the Benefits



Jordan/Bouldin

- ❑ Existing Site Improvements
- ❑ Improve Bank Angler Access and Facilities
- ❑ Investigate
 - Potential New Swimming Area
 - Re-evaluation of Recreational Flows
 - Lake Level Fluctuations



Smith

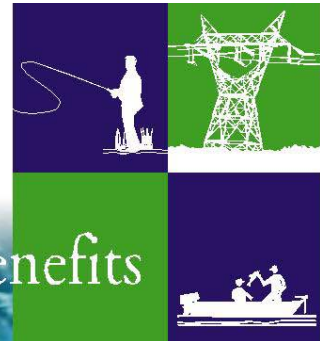
- ❑ Potential Redesign of Existing Facilities
- ❑ Enhance some Existing Ramps
- ❑ Improve Bank Angler Access and Facilities
- ❑ Improve Tailrace Access



Issues Applicable to all IAGs

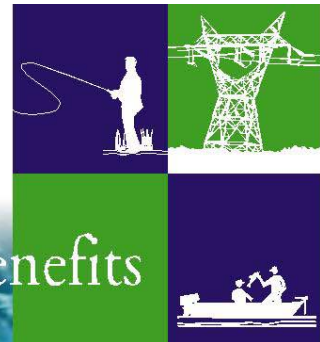
- ❑ Woody Debris
- ❑ Lake Clean-up
- ❑ Public Safety

Balance the Benefits



R8 IAG

- ❑ Developed a new Work plan
- ❑ Meeting to address the E12 Wetlands Public Education Outline
- ❑ Central Repository for all Public Education & Outreach Materials
- ❑ Comprised of PR Specialists
- ❑ Works directly with Ecological and Recreation IAGs to Research and Develop Effective Public Education Materials



Next Steps

- ❑ Complete Concept Designs and Cost Estimates
- ❑ Develop Proposals and Recommendations on:
 - Public Safety
 - Recreation Facilities & Access
 - Lake Level Fluctuations
 - Downstream Flows
- ❑ Provide Recommendations to the CCRT
- ❑ Prioritize PM&E Measures to be included in the APEA



Ecological IAGs

Balance the Benefits



In general IAGs have been:

- Working within the relicensing process to form new IAG's and Working Groups
- IAG's and Working Groups have been moving forward to address ecological relicensing issues
- Increasing stakeholder awareness and the understanding of complex ecological issues
- Negotiating mutually beneficial compromises and decisions



IAG Recommendations (Slide 1 of 3)

- The IAG recommends that APC use the Coosa Basin Assessment, the Warrior Basin Assessment, the ADEM 303(d) list, and the NPDES information for developing the Coosa and Warrior Environmental Assessments. Additional information identified by the IAG will also be used in this effort.
- The IAG recommends that APC continue to stay involved with the CWP process.



IAG Recommendations (Slide 2 of 3)

- The IAG recommends that APC share technical data with the CWP.
- The IAG recommends that APC coordinate with ADEM and ADECA to cooperate on public education efforts at the state and local levels.



IAG Recommendations (Slide 3 of 3)

- The IAG recommends that APC incorporate ADEM and ADECA public education information into their Shoreline Management Plan.
- The IAG recommends that this IAG consolidate its efforts with those of the E3 IAG.



Accomplishments to Date

- Finalized Erosion Study Plan and Survey forms.
- Finished surveys of erosion “Hot Spots” in project tailraces.
- Beginning surveys of potential erosion problems in tributary streams.



Accomplishments to Date

- Developed the Water Quality Report format in July 2002.
- Finished draft Water Quality Reports for most of the Warrior and Coosa Projects.
- Will distribute all of the Warrior and Coosa Project draft Water Quality Reports in one upcoming mailing.



This IAG presented its recommendations to the EcoRAT in May 2002.

Work Products

- TE&S Species database.

Recommendations

- Make TE&S database available to other IAGs as an analysis tool.
- Begin writing TE&S Species section of the EA.



E8 Lake Level Fluctuations

IAG identified several topics to investigate:

- Crappie Spawning Agreement for Weiss and Logan Martin lakes.
- Limiting daily Lake Level Fluctuations on Lay Lake to 4 inches.



E10 Project Releases

Two working groups created:

Weiss Bypass Working Group

- Minimum flows into the Weiss Bypass (HEC-RAS Model).
- Fish and Mussels species present in the Bypass (T&E species considerations).

Smith Tailrace Working Group

- Cold-water vs. Warm-water fishery.
- Enhancing the Smith tailwater fishery.



E11 Entrainment & Impingement

Developed Study Plan to address impacts

- Identify impacts through “Desk-top” studies

Work Products

- Entrainment and Turbine Mortality database
- Entrainment Study Progress Reports I, II & III



IAG Recommendations (Slide 1 of 3)

The E12 IAG recommends that APC provide protections for wetlands located within the project boundaries of the Warrior and Coosa hydroelectric projects. Specifically, APC should:

- Incorporate the wetland database into APC's GIS database as a tool for administering the Shoreline Management Plan.
- Continue to cooperate with the ACOE wetland permitting process for developments that impact jurisdictional wetlands.



IAG Recommendations (Slide 2 of 3)

- As part of the Shoreline Management Plan, APC will investigate guidelines to protect riparian zones located within the project boundary.

The E12 IAG recommends that the R8 IAG develop material and identify existing material or programs that can be used to provide public education on wetlands. This effort should include:

- The E12 IAG Public Education Outline to provide direction
- 1 to 2 members of the E12 to work with the R8 IAG



IAG Recommendations (Slide 3 of 3)

APC will begin drafting the wetlands existing environment section of the Environmental Assessment in October 2002, which will characterize the wetlands within the project area in context with wetlands within each respective basin.

