



Shoreline Management Plan



ALABAMA HYDRO
Powered By Nature



Balance the Benefits



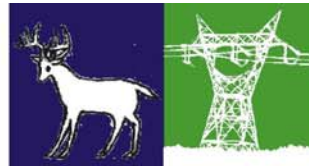
Issue Statement

CR6 & WR6 Shoreline Development –

Management and enforcement of shoreline development to protect public safety, access, aesthetics, terrestrial and aquatic habitats, and other resource values.



Balance the Benefits



Warrior and Coosa Issue Sheets

- Private development of adjacent lands
- Buffer Zones
- Future management tool
- Illegal recreational lot development and water quality impacts
- Permitting program
- Visual and access impacts



Balance the Benefits



Shoreline Resources

- Public and Private Shoreline Facilities
- Water Use and Quality
- Wetlands
- Cultural & Historic sites
- Land Use and Aesthetics
- Threatened & Endangered Species
- Fisheries
- Public Safety
- Recreation Access
- Soils/Erosion
- Terrestrial and Aquatic Habitats



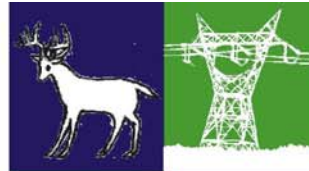
What is a Shoreline Management Plan?

According to FERC an SMP is:

“A comprehensive plan to manage the multiple resources and uses of the project’s shorelines in a manner that is consistent with license requirements and project purposes and addresses the needs of the public.”



Balance the Benefits

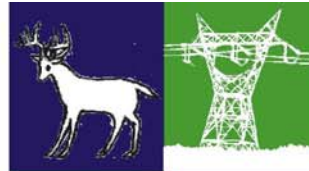


What's Covered in an SMP?

- A history of FERC requirements and a licensee's existing relevant policies/programs
- Opportunities for public involvement and an outline of a planning process
- Objectives and goals
- Land classification system
- Proposals for new and/or revised Shoreline Management policies



Balance the Benefits

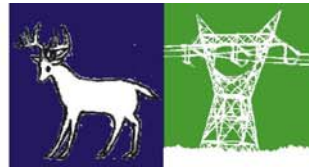


Alabama Power's Permitting Process

- Responsible for operating and maintaining its projects in accordance with license requirements and project purposes
- Standard License Article allows APC to grant specific non-project uses with differing degrees of review and processing
- APC can review and approve low impact, routine uses : non-commercial piers, boat docks, retaining walls
- Other more substantial non-project uses require resource agency consultation and/or FERC approval



Balance the Benefits



Alabama Power's Proposed SMP Outline

1. Introduction
2. Goal and Objectives
3. Shoreline Management Policies
4. Reservoir Specific Issues
5. Implementation and Review

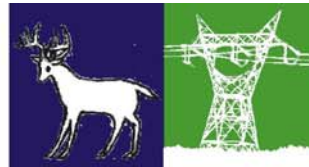
Appendix A – Glossary of Terms

Appendix B – Reservoirs Maps/Classifications

Appendix C – Detailed Permit Guidelines



Balance the Benefits



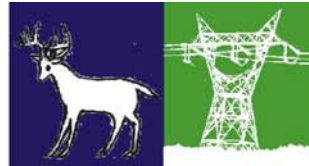
Alabama Power's Proposed SMP Outline

1. Introduction

- Project Description
- Purpose of the Shoreline Management Plan
- Planning Process
- Plan Organization



Balance the Benefits



Alabama Power's Proposed SMP Outline

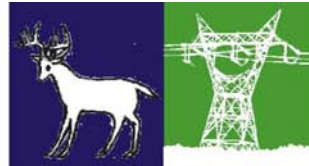
2. Goal and Objectives

To balance shoreline development, recreation use and resource conservation

- Provide for public access
- Protect cultural resources
- Protect operational needs
- Protect fish and wildlife habitat
- Balance private and public use of shoreline



Balance the Benefits



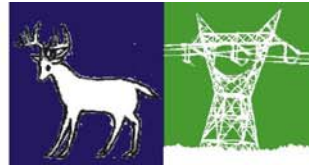
Alabama Power's Proposed SMP Outline

3. Shoreline Management Policies

- Land Classification System
- Vegetation Management
- Erosion Control
- Alabama Power's Permitting Process



Balance the Benefits



Alabama Power's Proposed SMP Outline

4. Reservoir Specific Issues

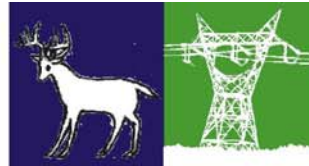
Specific reservoir characteristics and any unique shoreline management issues/policies

5. Implementation and Review

Plan implementation and a description of review/update procedures



Balance the Benefits

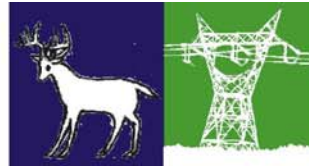


Next Steps

- Comments on SMP Outline – December 2, 2002
 - Review of Land Classification System (designations only)
- Future meetings
 - Discuss comments on SMP outline
 - Discuss permitting program



Balance the Benefits



Q&A

ALABAMA HYDRO
Powered By Nature



Balance the Benefits