

MEETING NOTES

**ALABAMA POWER COMPANY
MARTIN RELICENSING
MIG 5 - RECREATION**

**BETTY CAROL GRAHAM CENTER
AUGUST 6, 2009**

ATTENDEES:

Name	Organization	Name	Organization
Jimmy Lanier	CRATA	Rhett Hanks	Alabama Power
David Windsor	LMHOBO	Walter Ramey	Alabama Power
Dick Bronson	Lake Watch	Chris Greene	ADCNR
Dave Heinzen	Lake Watch/LMHOBO	Jody Waites	ADECA
Charles Walker	LMHOBO	Jerry Bynum	LMRA/ADECA Trails
George Uhrin	LMHOBO	Charles Borden	LMRA
Jesse Cunningham	LMHOBO		
Mitch Reid	ARA	Ericha Nix	ADCNR
Damon Abernethy	ADCNR	Marshall Griffin	Alabama Power
Steve Forehand	LMRA/Russell Lands	Viki Pate	Alabama Power
Mark Tuggle	Alabama Power	Kelly Schaeffer	Kleinschmidt
Sheila Smith	Alabama Power	Dave Anderson	Kleinschmidt
Lee Townsend	Alabama Power		

ACTION ITEMS:

- Stakeholder comments on Vision Statement for Lake Martin and any other initial comments on the recreation plan are due on or before September 18, 2009.

MEETING NOTES:

These notes summarize the major discussion items and are not intended to be a transcript or analysis of the meeting.

Walter Ramey (Alabama Power) opened the meeting and welcomed everyone to the initial meeting of MIG 5 (Recreation). Walter explained the purpose of this MIG is to develop a recreation plan that would also contain elements of a recreation program—meaning the plan would cover the first few years of the new license and the program would put the structure of future consultation and implementation into place.

Kelly Schaeffer (Kleinschmidt) then reviewed the meeting agenda and began the discussion of the recreation plan development process. The process was outlined in Study Plan 15 that was approved by FERC. Kelly reviewed the development process, noting the four steps of the process and how each step would be implemented within the MIG 5 group. The purpose of the initial meeting of

MEETING NOTES

**ALABAMA POWER COMPANY
MARTIN RELICENSING
MIG 5 - RECREATION**

**BETTY CAROL GRAHAM CENTER
AUGUST 6, 2009**

MIG 5 was to talk about Step One (Determine Desired Future Condition) and Step Two (Establish Baseline Conditions). Kelly reviewed the draft Solution Principles that were in the initial draft of the MIG5 (Recreation) Working Documents distributed prior to the meeting (attached). There were no comments offered concerning the Solution Principles. Kelly informed everyone that if they had any comments on these solution principles, they were welcome to submit them to Jim Crew on or before September 18, 2009.

Kelly then facilitated a discussion of the draft Vision Statement. Upon review of the draft Vision Statement that was included in the meeting materials, several group members offered that the statement, as written, was too specific and needed to be broader. These stakeholders indicated the draft Statement seemed more like objectives of the recreation plan, rather than a broad vision. Stakeholders noted that Martin is a very unique reservoir.

During the group discussion, several group members offered suggestions for crafting a new Vision Statement including “preserving/conserving what we have” and “improve what we can” including shoreline development/zoning and water quality. The discussion then turned to how Alabama Power could take a more proactive approach to shoreline development and water quality. The group offered that Alabama Power could get more involved with watershed protection groups and should take more responsibility for activities affecting Lake Martin. This discussion included suggestions to contact Mike Kensler who is leading outreach programs for the Auburn Water Resource Institute.

Kelly then steered the group back toward the Vision Statement and directed the group to concentrate on their vision of recreation at Lake Martin. The discussion turned to the recent Aquapalooza event held on the lake and how these types of events fit into the group’s vision of Lake Martin. After the group offered their opinions on large events such as this, everyone agreed that a new Vision Statement should be drafted and any stakeholder comments on this Vision Statement should be sent to Jim Crew on or before September 18, 2009. Alabama Power will review all comments and draft a revised Vision Statement for Lake Martin and present this statement prior to the next MIG 5 meeting in October.

After the break, Dave Anderson (Kleinschmidt) led a group discussion on the remaining questions contained in Step One and Step Two of the Recreation Plan Development Process Form. The following items were discussed.

- A question was raised as to whether any new commercial permit applications were currently outstanding. Alabama Power stated that there were no new commercial permit applications but some modifications to existing commercial facilities.
- There was also information provided about a new form of recreation that is popular in Florida called “Cable Parks.” Instead of actual boats pulling skiers, boarders, etc., the action

MEETING NOTES

**ALABAMA POWER COMPANY
MARTIN RELICENSING
MIG 5 - RECREATION**

**BETTY CAROL GRAHAM CENTER
AUGUST 6, 2009**

is simulated using a cable (i.e., no boat needed) and that there is development interest in Lake Martin to host this new recreation opportunity.

- Stakeholders indicated that Veazey's is open and operating.
- A question was raised as to whether Maxwell Gunter is "quasi-public"; stakeholders noted that they believe this is private (military only) facility.
- Some agreement has been reached at Stillwaters but it may not really be considered "public."
- Jesse Cunningham asked whether Russell Lands was going to move the Dixie Sailing Club. Russell Lands responded that they will likely move this facility to allow expansion of The Ridge.
- Dave reviewed the definition of "informal" sites – these are sites where there are no formal facilities.
- A question was raised whether Alabama Power has considered impediments to reservoir access at winter water levels – has Alabama Power considered a floating dock at Union like the one at Kowaliga?
- Dave raised the questions about litter receptacles and areas of existing congestion.
- Some stakeholders mentioned that some teens roped off a slough area near the Dam.
- Canoe portage is an issue – no portage around Martin.
- Handicapped hunting areas are needed.
- Public beach near Stillwaters is still needed.
- Some stakeholders would like to see the upper reaches of Lake Martin/upper Tallapoosa be accessible to non-motorized boats only.



AGENDA

**Martin Project Relicensing
MIG 5 (Recreation) Meeting
August 6, 2009
8:30 AM – 11:15 PM
Betty Carol Graham Center**

8:30 AM – 8:40 AM	Introductions & Meeting Purpose
8:40 AM – 9:00 AM	Overview of Recreation Plan Development Process
9:00 AM – 9:30 AM	Discussion of Draft Solution Principles and Vision Statement
	Morning Break
9:45 AM – 11:00 AM	Review of Existing Inventory and Discussion of Facilities, Sites, and Access Needs
11:00 AM – 11:15 AM	Action Items and Next Steps



MARTIN DAM RELICENSING

Martin Issue Group 5 (Recreation)

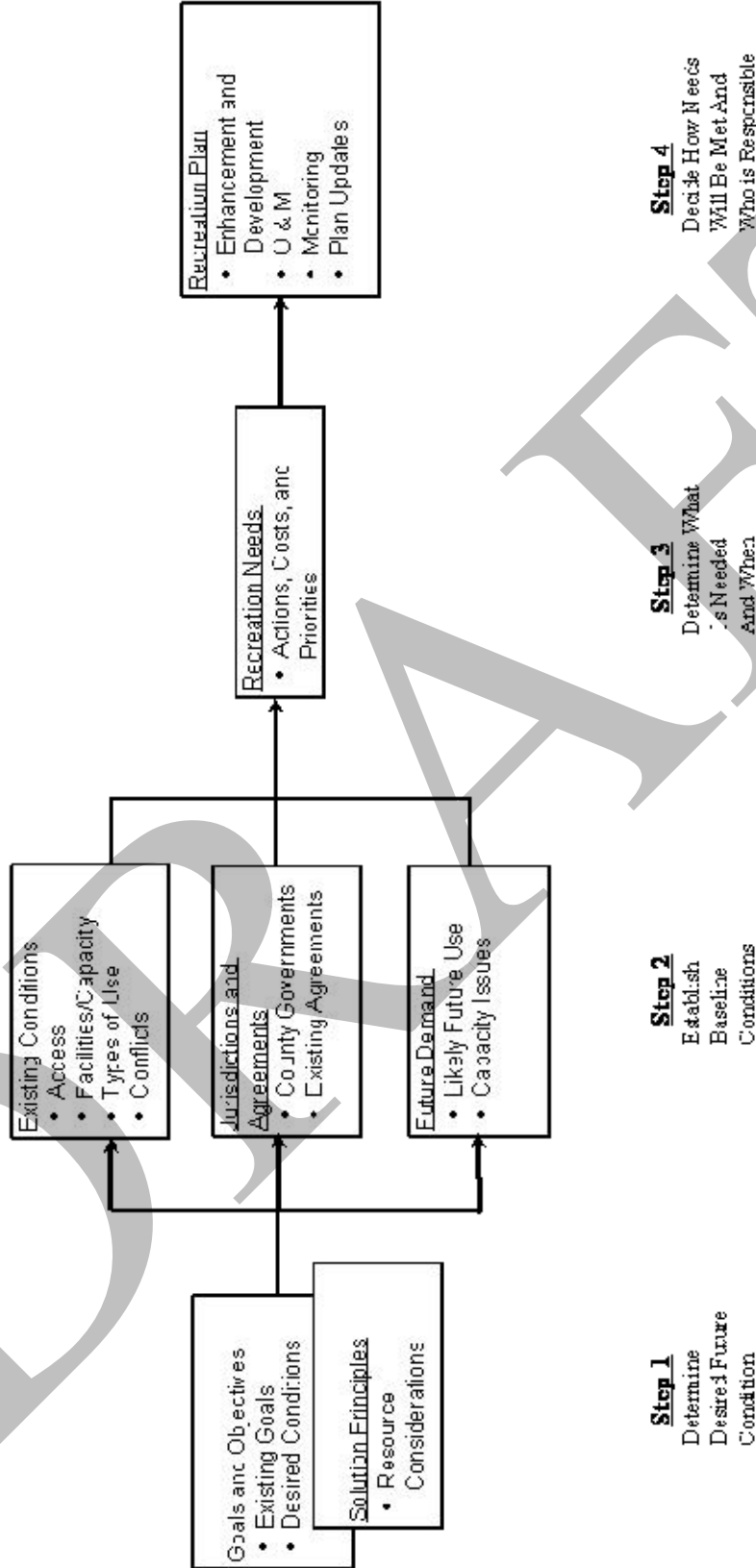
Working Documents

DRAFT

Recreation Plan Development Process Diagram

FINAL

Recreation Plan Development Process Diagram



K. LINDSEY CEMENT, ASISTANT

Solution Principles

DRAFT

Consideration of new recreational facilities should be based on demonstrated need and the potential impact on existing facilities.

1. Priority should be given to demonstrated need within the FERC project boundary.
2. Priority should be given to recreational proposals where multiple stakeholders offer significant participation.
3. Recreational facilities should appeal to a broad public.
4. Reasonable access for the disabled should be provided.
5. Recreational needs should be prioritized for the project including a schedule of proposed improvements so that all costs are not in the first few years of the new license.
6. The improvement or expansion of existing recreational facilities should be considered first.

Preferred consideration will be given to ideas that:

- do not promote facilities that would adversely impact existing commercial operations;
- identify actual recreational needs that are not filled by existing facilities;
- receive broad public support.

Recreation Plan Development Process Form

DRAFT

The following is a list of questions designed to help characterize existing recreation resources and aid in development of an appropriate recreation plan for the Martin Project. Questions pertaining to recreation management are categorized according to a four-step recreation planning process developed for the project.

STEP 1 – DETERMINE DESIRED FUTURE CONDITION

- 1. Identify impoundment and/or downstream tailrace qualities important to keep and any qualities that need changes.**

These will be identified by MIG 5 members.

- 2. Are there unique characteristics of the reservoir and/or tailrace relative to other reservoirs/tailraces in the area?**

These will be identified by MIG 5 members.

- 3. What is the overall vision for the reservoir and/or tailrace, in terms of recreation experiences and opportunities?**

The long-term vision for the Martin Dam Project is to recognize, protect, and enhance the fishery, water quality, aesthetic values, cultural resources, and public recreational opportunities on the reservoir, while recognizing the need to protect habitat supporting threatened, endangered, and sensitive species of Lake Martin, and ensure adequate facilities and public access are provided. Given the size of the reservoir/hydro-project area, it is felt that it can continue to support a diversity of recreation opportunities. Recognizing that needs and demands will change, recreational uses will be monitored and managed to balance access/uses with the protection of natural resources and environmental quality; and planning for new facilities and management schemes will remain adaptive to changes.

- 4. Are there sensitive biological or cultural resources associated with the Project that need to be considered? Where are these resources located and are there seasonal sensitivities (e.g., nesting or spawning times, etc.)?**

This will be determined by other MIG groups and updated here as results are available.

- 5. Identify specific goals and objectives for managing recreation at the reservoir and/or in the tailrace.**

Recreational sites and access areas should be adequate to allow for the continued population growth in the region over the term of the new license.

Sites should be spaced around the project to provide legal public access to the different sections of the reservoir.

Recreation Plan Development Process Form

DRAFT

Uncrowded conditions should be available most of the time at the sites, with natural viewscapes and provisions for most of the current and anticipated popular recreational activities incorporated into the overall provisions.

Sites should be located as to minimize land use conflicts with adjoining property.

STEP 2 – ESTABLISH BASELINE CONDITIONS

6. What is the nature of existing recreational access to the reservoir?

a. How many publicly accessible, developed recreation sites are there?

As of 2009, there are 21 publicly available recreation sites and 13 public marinas. In addition, there are 5 quasi-public recreation areas located at the project.

b. Where are they located/how are they distributed around reservoir?

See the Martin Dam Project Recreation Sites/Land Use Map.

c. Of these publicly accessible access sites how many are owned and operated by public versus private entities and how are they supervised?

Of the 21 publicly available recreation sites, XX are owned by APC, XX are owned by the state, and XX are owned by a local government entity (county or city). Of the XX owned by APC, XX are leased to the state for operation and maintenance.

Of the 13 public marinas, XX are owned by APC (but leased to another entity) and XX are owned by a private entity.

Of the 5 quasi-public recreation areas, XX are owned by APC (but leased to another entity) and XX are owned by a private entity.

Of the 21 publicly available recreation sites, XX are managed by APC, XX are managed by the state, XX are managed by a local government entity (county or city).

Of the 13 public marinas, 13 are managed by a private entity.

Of the 5 quasi-public recreation areas, 5 are managed by a private entity.

d. How many sites, open to the public, provide boat access to the reservoir?

17 of the 21 publicly available recreation sites provide boat access to the reservoir.

11 of the 13 public marinas provide boat access to the reservoir.

All 5 quasi-public recreation areas provide boat access to the reservoir.

Recreation Plan Development Process Form

DRAFT

e. How many provide shoreline fishing?

There are 7 formal fishing piers at 6 of the publicly available recreation sites.

f. Identify the most heavily used facilities.

The top 5 most used of the 21 publicly available recreation sites are (in order of use): Wind Creek State Park, Kowaliga (Hwy. 63) Launch, Alexander City Boat Ramp, Union Ramp, and DARE Boat Landing.

g. Are there informal, undeveloped use areas? Where are they?

9 of the 21 publicly available recreation sites are classified as informal although they may have minor amenities (e.g., some sort of boat ramp). There are also XX islands (XX acres) and XX acres of land classified as Natural/Undeveloped available for passive public recreation.

7. What types of existing developed facilities are there?

a. Enumerate boat ramps, restrooms, docks, and other facilities.

At the 57 sites, there are 1,051 picnic tables, 966 grills, and 871 firepits. There are 11 swimming areas. For boating use, there are 690 wet slips, 54 jet ski pads, and 2,493 dry storage spaces.

There are an estimated 1,221 parking spaces with 70 of these being ADA compliant. There are 48 hard surfaced boat launches, with 63 lanes. An additional 6 boat launches are either gravel or provide carry-in access.

22 of the sites provide restroom facilities, with 464 flush toilets, of which 320 are ADA compliant.

There are 865 RV sites, 35 cabin sites, and 18 tent sites. An additional 6 sites are considered usable for primitive camping (not including the islands or Natural/Undeveloped land).

Recreation Plan Development Process Form

DRAFT

b. What is the existing capacity at each site?

Name of Publicly Available Recreation Site	# of Vehicle Spaces	# of Vehicle/Trailer Spaces	# of ADA Spaces	# of Parking Spaces
Alexander City Boat Ramp	3	44	4	51
Bakers Bottom Landing	0	0	0	0
Coley Creek Ramp*	0	11	0	11
DARE Boat Landing	0	23	0	23
DARE Power Park (GPU #1)	50	0	2	52
Elkahatchee Landing*	0	6	0	6
General Public Use Area #2	0	0	0	0
Jaybird Landing*	0	19	0	19
Johnson Creek Boat Ramp*	4	0	0	4
Kowaliga (Hwy. 63) Launch	6	39	2	47
Madwind Creek Ramp	3	13	0	16
New Hope Ramp*	0	13	0	13
Pace Point Ramp*	0	58	0	58
Paces Trail*	9	0	0	9
Piney Woods Boat Ramp	0	18	0	18
Scenic Overlook	9	0	1	10
Smith Landing	0	12	0	12
Sturdivant Creek Ramp*	0	10	0	10
Timbergut Landing	0	0	0	0
Union Ramp	0	25	0	25
Wind Creek State Park	90	18	9	117
Name of Quasi-Public Recreation Sites	# of Vehicle Spaces	# of Vehicle/Trailer Spaces	# of ADA Spaces	# of Parking Spaces
Camp Alamisco*	23	0	1	24
Camp ASCCA (Dadeville Campus)	0	0	13	13
Camp ASCCA (Easter Seal)	12	0	28	40
Kamp Kiwanis				
Maxwell Gunter AFB Recreation Area*	17	0	1	18

Recreation Plan Development Process Form

DRAFT

Name of Private Access Site	# of Vehicle Spaces	# of Vehicle/Trailer Spaces	# of ADA Spaces	# of Parking Spaces
1st Retreat (off Castaway)	0	0	0	0
Central Alabama Water and Sewer Authority	1	0	0	1
Children's Harbor (Camp Smile-A-Mile)	51	0	2	53
Dixie Sailing Club*	40	0	0	40
Emerald Shores Boat Ramp	0	0	0	0
Holiday Shores Boat Ramp	0	0	0	0
Indian Campgrounds	0	0	0	0
Indian Shores Boat Landing*	0	2	0	2
Kowaliga Bay Estates	0	0	0	0
Lake Martin RV Resort*	0	6	0	6
Lakeview Mobile Home Park	0	0	0	0
Marina Marin	0	0	0	0
Pace Bluff	0	0	0	0
Russell Ferry	0	0	0	0
Shady Bay*	0	4	0	4
Timberlake Townhomes	0	0	0	0
Willow Point	16	0	0	16
Wind Creek Farms	0	0	0	0

Name of Commercial Recreation Site	# of Vehicle Spaces	# of Vehicle/Trailer Spaces	# of ADA Spaces	# of Parking Spaces
Anchor Bay Marina*	8	0	1	9
Bay Pine Marina and BBQ	0	3	0	3
Blue Creek Marina*	22	0	0	22
Chuck's Marina*	2	0	0	2
Harbor Pointe Marina	98	0	1	99
Kowaliga Marina	19	0	2	21
Lakeside Marina (Blue Creek)	0	0	0	0
Parker Creek Marina*	0	23	0	23
Pleasure Point Park and Marina*	0	4	0	4
Real Island Marina and Campground	6	0	0	6
River North Marina	83	0	3	86
Sonny Fromby and Sons*	0	8	0	8
The Ridge Marina	220	0	0	220

* For unimproved and gravel parking areas at sites, capacity was estimated as the number of parking spaces that could be accommodated if the site were formalized allowing for boat or camper trailers, aisles, and/or turn around areas, as necessary.

Recreation Plan Development Process Form

DRAFT

c. What is the general condition of each site and its facilities?

Based on observations during the site inventory, all sites are in good condition. The majority of the sites have paved access and are well signed.

Based on the assessment of ADA compliance the public sites, both Wind Creek State Park and DARE Power Park offer a high degree of ADA compliance. Numerous other locations are partially compliant, providing supporting facilities but lacking fully compliant access pathways.

8. Describe notable recreation activities on the reservoir.

a. List recreation activities currently occurring and identify most prominent activities.

This question will be answered when the results of Study 12(g) are available.

b. Where are these uses occurring, and are they concentrated in certain areas?

This question will be answered when the results of Study 12(g) are available.

c. Identify existing impediments to these activities, if any.

These will be identified by MIG 5 members.

9. Are there known management issues associated with use?

a. Are there areas of congestion, and if so where?

Based on the history and consultation for the current Martin Dam Project Comprehensive Recreation Plan, the area around “Needle’s Eye” could propose a problem if there was additional boat traffic to and from the Chapman Creek embayment.

Others will be identified by MIG 5 members.

b. Are there known conflicts between users, and if so where and when?

These will be identified by MIG 5 members.

c. Are there other known management issues, such as littering, trespassing, etc.?

These will be identified by MIG 5 members.

10. What is the expected future demand for recreation activities at the reservoir?

a. Will existing facility capacity likely be exceeded, and if so where and when?

This question will be answered when the results of Study 12(g) are available.

Recreation Plan Development Process Form

DRAFT

- b. Would accommodating this demand be consistent with the long-term vision for the reservoir?**

This will be determined by MIG 5 members.

- c. Will demand introduce new or additional congestion, conflicts, or other management issues?**

This will be determined by MIG 5 members.

11. Identify current local benefits from recreation and any local detriments.

These will be identified by MIG 5 members and the results of Study 12(g).

STEP 3 – DETERMINE WHAT IS NEEDED AND WHEN

12. Ideas for better or different access, consistent with Step 2 above.
13. Potential facility enhancements or upgrades, consistent with Step 2 above.
14. Potential new facilities, or other management actions, consistent with Step 2 above.
15. What are the priorities regarding identified needs both in terms of resources and time? How do priorities compare across the entire Project?

STEP 4 – DECIDE HOW NEEDS WILL BE MET AND WHO IS RESPONSIBLE