



Customer-Owned Meter Equipment

Meter Mounting Heights and Tall Multi-meter Stacks

Alabama Power Company's meter mounting height rules, which have been in effect since 1988, are as follows (from Rule E-2 of the *APSC Special Electric Rules*):

1. *The center of meters hereafter installed shall not be more than five (5) or less than four (4) feet above final grade or floor level.*
2. *When metering for seven (7) or more apartments grouped on one wall, the center of meters hereafter installed may be as high as six (6) feet above final grade or floor level.*

Some multi-position meter units that otherwise fit the catalog number templates listed below **are unacceptable on the Alabama Power system because of meter mounting height limits**. The following guidelines clarify these situations:

- 5-tall vertical meter stacks. These are not allowed under any circumstances. They are physically too tall to allow meter heights to meet both the minimum and maximum height limits.
- 4-tall vertical meter stacks. These require prior approval by local APC personnel for each specific installation. In many cases, these units cannot meet the meter mounting height limits.
- 3- and 2-tall vertical meter stacks. Assuming these models otherwise meet APC requirements and are listed below, these units are allowed without prior approval. However, actual mounting of the units and control of final grade near the units must be managed to ensure the meter heights fall within the allowable minimum and maximum mounting limits. Failure of an installation to meet the mounting height requirements will result in refusal of that installation.

Note also that while most 3-tall meter stacks do fall within meter mounting limits, we have encountered some non-residential units that exceed the limits.

Security Requirements

Every meter socket must support the addition of an APC high security lock.

Multi-position Sockets

Design of some multi-position meter sockets can make security locking difficult, if not impossible. For this reason, only ring-type sockets are acceptable in multi-position units.

Exceptions:

- Horizontal multi-meter units. Multi-position sockets with no vertically stacked meter positions may use ring- or ringless-style covers. If ringless-style covers are used, the sockets must provide adequate access to the bottom side of each meter compartment to accommodate installation of security locks.



- Sockets with lever bypass mechanisms. These designs generally require removal of ringless-style covers for operation of the bypass switch prior to removal of the meters. These sockets must provide acceptable alternate methods of applying security locks.

Equipment Weight Limit

No customer-owned metering equipment shall be acceptable if it has a lift-off door or cover that exceeds 40 lbs. This limit applies to wiring compartments that house service or service entrance conductors as well as to meter compartments. Hinged doors or covers that are otherwise supported while open are not subject to this limit. Multi-part doors or covers are acceptable if such parts can be removed individually and each part does not exceed the above stated limit.

Equipment for Commercial Customers

With commercial customers, it has become increasingly difficult to schedule service interruptions for meter changeouts or tests. For 120, 208, or 240 volt services, Company-provided meter sockets with lever bypass switches allow for meter removals without service interruptions. (See [Bypass Socket.](#)) Commercial (or industrial) customers who elect to provide their own meter sockets shall be instructed to choose equipment that includes *lever bypasses* similar to those in Company sockets. If such equipment is not on the list of customer-owned units below, a sample must be submitted for pre-acceptance testing.

Inspection Jurisdictions

It is the customer’s responsibility to ensure the meter socket meets current National Electric Code requirements in the jurisdiction where it will be installed.

Customer-owned Meter Equipment in Which Alabama Power Company Will Install Its Meters

Cooper / B-Line:

Single Position w/out Bypass (OH-Only)

EN20L43GR1	EN20L43AL1
------------	------------

Single Position with Bypass (OH – Only)

EL20L73GR1	EL20L73A1	EL20L53AL1
------------	-----------	------------

Durham:

Single Position w/out Bypass

UT-RS223A, 200a underground only		
UT83395C-SC	UAT83395C-SC	1004296
1004296A		

Multiple Position w/out Bypass

1006927	1004582A	1004582
1006928	1004583A	1004583
1006929	1004584A	1004584
1006930	1004585A	1004585
1006931	1004586A	1004586



Single Position with Bypass

UT-H7213C-SC	1007180	1009749
UAT-H7213C-SC	UAT-H5213C-SC	

Eaton / Cutler-Hammer:

Multi-Position w/out Bypass (5-tall vertical units are not allowed. 4-tall vertical units are allowed only if the final meter heights fall within acceptable limits. Check with local Alabama Power personnel to confirm.)

1MPn124R	1MMn12R	3MMn12R
1MPn126R	1MMn20R	3MMn20R
1MPn206R		

The final "R" indicated ring-type sockets for Cutler-Hammer. "RRL" would indicate ringless - NOT allowed.

(The 3MM units are meter modules with 1-ph sockets and 3-ph busses. That is, 3-ph service into the unit, 1-ph -- network --service out to each customer.)

(Note: "n" represents the number of meter positions.)

Multi-Position with Lever Bypass Mechanisms (5-tall vertical units are not allowed. 4-tall vertical units are allowed only if the final meter heights fall within acceptable limits. Check with local Alabama Power personnel to confirm.) Installation must provide unimpeded access to at least one side or the bottom of every meter compartment for the mounting of a high security lock.

35MMn20R12	37MMn20R12
35MMn40R1240 (for 320a 1ph meters)	
37MMn40R1240 (for 320a 3ph meters)	

(Note: "n" represents the number of meter positions.)

Single Position w/out Bypass (Overhead Only)

35MM120R12	MB1212L200BTS	UTRS101LCH *	WMB202040S
CGBT24M1S	MB2040B200BTS	UTRS101BE	WMB204040S
CGBT30M2S4	MB4040B200BTS	UTRS213CCH *	WMB2048SLB
CHR3N7NS	MB816B200BTS	UTRS213BE	WML20612SN
CMB1212B200BTS	MB816P200BTS	UTRS202NCH	
CMB2424B200BTS	CMB2436B200BTS	MHM200PAPC	
MBT48B200BTS	MBB200BTSC**	HP816P400BSL	
MBT48B125BTS	MBB150BTSC**	CMB1212L200BTS	

* - these parts have been superseded by UTRS101BE and UTRS213BE, respectively.

** - MBB200BTSCR and MBB150BTSCR not allowed, ring type sockets.

Single Position w/out Bypass (Overhead and Underground)

- MB816B200BTSG (200AMP meter socket with 200amp main breaker)
- MB816B150BTSG (200AMP meter socket with a 150AMP main breaker)
- MB816P200BTSG (200AMP meter socket with a Provision to field add a Main breaker)
- MB816B200STD (200AMP meter socket with 200amp main and an installed 5th jaw)
- MP816B150STD (200AMP meter socket with 150amp main and an installed 5th jaw)
- MB816P150STD (200AMP meter socket with a Provision to field add a Main breaker and an installed 5th jaw)

Single Position Pedestal

CHRPX or CHR...PX, 125A socket on UG pedestal with breakers and/or receptacles.

If present, numbers/letters between CHR and PX refer to number of receptacles included in the unit. Used with direct-buried underground pedestal extension or flange for pad mounting. Either will be furnished by customer.



General Electric:

Multi-Position Sockets w/out Bypass (5-tall vertical units are not allowed. 4-tall vertical units are allowed only if the final meter heights fall within acceptable limits. Check with local Alabama Power personnel to confirm.)

Single phase 125 or 200a Mini Mod (all-in-one) multi-position without bypass and beginning with TMM...
TMMR... indicates ringless, NOT allowed

Single phase 125 or 200a Meter Mod (modular) multi-position without bypass and beginning with TMP...
TMPR... indicates ringless, NOT allowed

Multi-Position with Lever Bypass Mechanisms (5-tall vertical units are not allowed. 4-tall vertical units are allowed only if the final meter heights fall within acceptable limits. Check with local Alabama Power personnel to confirm.) Installation must provide unimpeded access to at least one side or the bottom of every meter compartment for the mounting of a high security lock.

Three phase 225a 4w 120/208 or 120/240 volt multi-position with lever bypass and beginning with TMPR3...

Single Position w/out Bypass (OH-Only)

TM420RMS, TSLR1220CSAL, TSM(R)420CSCU(P), TSM820CSFL, TSM820CSCU, TSMR420CSFLFMG
TSMF420CSFL (comes on some FEMA trailers), TSMR020CSGP, TSMR2020CSCUFMG, TSMR815CSFLFMG,
TSMR415CSFLFMG, TSLR1220FSAL, TSM820CSFL

Landis+Gyr:

Single Position with Bypass (OH Only)

49407-82AB

Leviton:

Single Position w/out Bypass (OH Only)

200 LP820-MC

Single Position with Lever Bypass Mechanism (OH Only)

LP820-LMC	LP820-5MC
LP815-LMC	LP815-5MC

Midwest:

Single Position w/out Bypass

MS250C, Disconnect Box, 200a with a 200a disconnect R256EB1NA, 200a housepower type, OH Only.
R208CR2A, 200a w/ main and sub breakers, OH-Only.
R011C010U, UG Tempo Service Box

Single Position with Lever Bypass Mechanism

RS45508 (400 amp socket for use with 320 amp meter), OH Only.

Milbank:

Multi-Position w/out Bypass

U285n-X, where 'n' is the number of positions: 2, 3, 4, 5, or 6

S-9052-EL	S-9053-E	S9053-EL
S-9054-E	S9054-EL	
S-9055-EL	S9056-EL	S-9056-E
S2603-FT-XT	S2604-FT-XT	S2605-FT-XT
S2606-FT-XT	AP1722-F-K3-SOCO	UAP1722-F-K3-APCO
AP2603-FT-XT	AP2604-FT-XT	AP2605-FT-XT
AP2606-FT-XT	U1722-X-F-K3-APCO	

Single Position w/out Bypass

U5101-XL-38GR (125 amp temporary service socket) U7021-DL-TG200A4TRLOH
U9647N-RL-200 (200 amp socket with main breaker) OH-Only
UAP5024-XL (200 amp houseposer-type socket) OH-Only.
UAP9421-RL-PDXLS (200 amp housepower-type socket) OH-Only
U5896-PXL-200 (200A OH or UG with 200A Main Breaker.)
U5168-XTL-200, OH-Only.

U5792-XL-SOCCA	UAP5792-XL-SOCCA	U5792-XL-SOCO
UAP5792-XL-SOCO	AP-2167-DL-TG	AP2167-DL-TG-SOCO



U5734-XL-SOCCA UAP5734

Single Position with Lever Bypass Mechanism

- U401-0-2/200 (400 amp socket for use with 320 amp meter)
- U6227-X-400-K3L (400 amp socket for use with 320 amp meter)
- U6227-X-400-K3L-5T6 (400 amp socket for use with 320 amp meter, 5th terminal for 120/208V Network)
- U6227-X-400-K3L-5T9 (400 amp socket for use with 320 amp meter, 5th terminal for 120/208V Network)
- U6229-X-400-K7L (400 amp socket for use with 320 amp meter, 3-phase, 4-wire)
- U6115-X-2/200-K7L (400 amp socket for use with 320 amp meter, 3-phase, 4-wire)
- S6585-X-2-200-5T9 (320 amp socket, 1-Phase, 120/240V or 120/208V with 5th terminal.)
- U5059-X-2/200-K3L-IL (320 amp socket, 1-Phase, 120/240V)
- U3061-XL U3061-XL-SOCO UAP3061-XL-SOCO
- A3061-XL U4433X S5768-X-SOCO
- UAP3502-RL-SOCO UAP4885-XL-SOCCA S5868-X-APCO

Single Position Commercial Service & Unmetered Street Light Pedestal with Lever Bypass Mechanism

- CP3B5252BRSSBKSL1 with 8" riser. 208Y/120 VAC, 3-phase, 4-wire; 200 Amps Maximum.(Must have 8" riser to meet minimum meter mounting height of 48") (Unmetered controls on pedestal add 30 watts to unmetered system billing wattage under rate ODL)
- CP3B5212BRSSBKSL1 with 8" riser. 120/240VAC, 1-phase, 3-wire; 200 Amps Maximum.(Must have 8" riser to meet minimum meter mounting height of 48") (Unmetered controls on pedestal add 30 watts to unmetered system billing wattage under rate ODL)
- CP3B5411GR22SP1 with 8" riser. 120/240VAC, 1-phase, 3-wire; 320A Exposed Meter Socket, 400 Amps Maximum. 22kA AIC Rating. (Must have 8" riser to meet minimum meter mounting height of 48") (Unmetered controls on pedestal add 60 watts to unmetered system billing wattage under rate ODL)
- CP3B5212BSBKSP1, 120/240 VAC, 1-phase, 3-wire; 200 Amps Maximum, 200A Exposed Meter Socket, 10kA AIC Rating. (Unmetered controls on pedestal add 30 watts to unmetered system billing wattage under rate ODL)
- CP3B5212BRBKSL1 Type A with 8"riser. 120/240V, 1-phase, 3-wire; 200 Amps Maximum, 200A Exposed Meter Socket, 10kA AIC Rating. (Unmetered controls on pedestal add 30 watts to unmetered system billing wattage under rate ODL)

Single Position Commercial Service Pedestal with Lever Bypass Mechanism

- CP3B5115P42SGWFSP1 with 8"riser. 120/240V, 1-phase, 3-wire; 100 Amps Maximum, 200A Exposed Meter Socket w/bypass, 42kA AIC Rating.
- CP3B51115PBKSP1 with 8"riser. 120/240V, 1-phase, 3-wire; 100 Amps Maximum, 200A Exposed Meter Socket w/bypass, 10kA AIC Rating.

Pacific Utility Products:

USP Non-Residential Service Pedestal. The catalog number must match exactly to those listed. Other cat. no. must be approved before use.

USP24R-57-M3100-318CHB-AL – 120/208V, 3-phase, 60hz, 4-wire, 200A-16S meter socket , commercial metered service pedestal.

Siemens:

Power Mod Modular Metering System. Any catalog numbers that meet the following template are acceptable, subject to mounting height limitations:

(W)MM n p sss J

(W)MM –indicates non -bypass sockets

Leading "W" in part number indicates N3R Outdoor rating and no "W" in part number indicates N1 indoor rating.

n - number of meter positions

p - phases (1 - single phase, 2 - network)

sss - individual socket rating (125, 225 amperes)

R - would indicate ringless socket covers, NOT allowed

J - optional, indicates 5-jaw meter socket

Example: WMM31225 is 3 meter positions, single phase, 225 amps per position

Multi-Position w/out Bypass (5-tall vertical units are not allowed. 4-tall vertical units are allowed only if the final meter heights fall within acceptable limits. Check with local Alabama Power personnel to confirm.)

Single phase 125 or 225 amp Uni-Pak metering. Any catalog numbers that meet the following template are acceptable, subject to mounting height limitations (**see special note**):

SP bb n 1 sJ or WP bb n 1 sJ



b or bb - is bus rating (4 - 400 amp, 6 - 600 amp, 10 - 1000 amp, etc.)

n - is number of meter positions

1 - indicates single phase

s - is individual socket rating (1 - 125 amp, 2 - 225 amp)

R - would indicate ringless type covers, NOT allowed

J - optional, indicates 5-jaw meter socket

Example: WP6512 is a 600 amp main bus, 5 meter positions, single phase, 225 amp per position, ring-type covers WP6512J is the same unit, but with 5-jaw meter sockets

Special Note: Siemens UNIPAK does not meet the 2020 NEC as the 6-handle service entrance rule is not allowed.

Other numbers:

WMM-2U

WMS-6U

WMM-3U

WMS-8U

WMM-4U

UA2717-FGAB

Single or Multi-Position with Lever Bypass Mechanisms (5-tall vertical units are not allowed. In this style, the 4-tall vertical units are also too tall to meet our mounting requirements. Check with local Alabama Power personnel to confirm.) Installation must provide unimpeded access to at least one side or the bottom of every meter compartment for the mounting of a high security lock.

Single phase 225 amp Commercial Meter Modules:

(W)MLn1225RJ, where n is number of meter positions

Three phase 100 amp Commercial Meter Modules:

(W)MLn3100RJ, where n is number of meter positions

Three phase 200 amp Commercial Meter Modules:

(W)MLn3225RJ, where n is number of meter positions

Three phase IN / Single phase (network) OUT 225 amp Commercial Meter Modules:

(W)MLn2225RJ, **(W)MLn2AB225RJ**, **(W)MLn2BC225RJ**, **(W)MLn2CA225RJ**,
where n is number of meter positions

Single phase 400 amp Commercial Meter Modules:

(W)ML11400RJ (22kA AIC) , **(W)ML11400RJH** (35kA AIC) , **(W)ML11400RJFS** (100kA AIC)

Three phase IN / Single phase (network) OUT 400 amp commercial Meter Modules:

(W)ML12400RJ (22kA AIC) , **(W)ML12400RJH** (35kA AIC) , **(W)ML12400RJFS** (100kA AIC)

Three phase 400 amp Commercial Meter Modules:

(W)ML13400RJ (22kA AIC) , **(W)ML13400RJH** (35kA AIC) , **(W)ML13400RJFS** (100kA AIC)

Application note: Leading "W" in part number indicates N3R Outdoor rating and no "W" in part number indicates N1 indoor rating. 400 amp modular meter sockets require H5976 anti-inversion clip.

Single phase 225 amp Uni-Pak metering with lever bypass. Any catalog numbers that meet the following template are acceptable, subject to mounting height limitations:

WPL bb n 12RJ

L - indicates lever bypass

b or bb - is bus rating (4 - 400 amp, 6 - 600 amp, 10 - 1000 amp, etc.)

n - is number of meter positions

1 - indicates single phase

2 - is individual socket rating (225 amp)

R - indicates ringless type covers, required for lever bypass operation J - indicates 5-jaw meter socket

Example: WPL6412RJL is a 600 amp main bus, 4 meter positions, single phase, 225 amp per position, ringless covers, with lever bypass.

Single Position Socket for Attaching to Multi-Position Modular Assemblies (e.g., for house meter)

Each of these has lever bypass.

WCL2040B1T(n)RJ, 1ph or network, 4- or 5-jaw

WCL2040B2T(n)RJ, 3ph source, 5-jaw network meter bases

WCL2442B3T(n)RJ, 3ph, 4 wire, 7-jaw

where (n) refers to main breaker options



Single Position w/out Bypass (Overhead or Underground Service)

MM0406L1200RGA	MC0816B1200RGA	MC0408B1200RGA	MC0408B1150RGA	
MC0606L1200RGA*	MC0816B1150RGA	UAT817-XGSE	UAT837-XGSE	

*Special Note: MC0606L1200RGA does not meet 2020 NEC.

Single Position w/out Bypass - The following units are approved for OVERHEAD services only.

MM0202B1150R	MM0202B1200R	MC0408B1150RT	MC0816B1200RTH	MC0816B1150RCT
MC2040B1150RC	MC2040B1200RC	MC0408B1200RT	MC0816B1200RTZ	MC0606L1200RA
MC2040B1150R	MC2040S1200JLC	MC0606L1200R*	MC0816B1200RCT	MC0816B1200RT
MC2040B1200R		UAT317-DGAB		

*Special Note: MC0606L1200R does not meet 2020 NEC.

Single Position w/out Bypass (Trailer Service Panel)

MC0816MB1200SN

Single Position 200 amp with Lever Bypass Mechanism

40407-02SE 41405-02SE 41407-02SE

Single Position 320/400 amp with Lever Bypass Mechanism

MM0404L1400RLM*, MC0816B1400RLTM*, 49004-82AB

*Special Note: MM0404L1400RLM and MC0816B1400RLTM does not meet 2020 NEC and require H59676 anti-inversion clip.

Single Position 1ph Tempo Service

TL(xxx)RT(y) (ringless), TL(bb)NT(y) (ring type), with 125A main lugs
 TD(xxx)RT(y) (ringless), TD(bb)NT(y) (ring type), with 100A main brkr

With Pedestal for Direct Burial

TL(xxx)RP(y) (ringless), TL(xxx)NP(y) (ring type), 125A main lugs
 TD(xxx)RP(y) (ringless), TD(xxx)NP(y) (ring type), 100A main brkr

With Lever Bypass

TL(xxx)LT(y), 125A main lugs
 TD(xxx)LT(y), 100A main brkr

(xxx) indicates receptacle options
 (y) indicates other custom options

SolarReady Meter Combination

MC3042S1400SCL – 400A, Lever Bypass, OH/UG, Surface Mount

Square D:

Multi-Position w/out Bypass (5-tall vertical units are not allowed. 4-tall vertical units are allowed only if the final meter heights fall within acceptable limits. Check with local Alabama Power personnel to confirm.)

--See APPENDIX A for special requirements for Square D type EZM meter centers.--

Single phase 125-200a EZ Meter-Pak (modular) multi-position without bypass. Any catalog numbers that fit the following template are acceptable:

EZM11 n sss

Note: EZMR... indicates ringless type, NOT allowed
 n - number of meter positions
 sss - ampere rating per position

Single phase 125-200a EZ Meter-Pak (modular) three phase in, single phase 120/208v out multi-position without bypass. Any catalog numbers that fit the following template are acceptable:



EZM31 n sss

Note: EZMR... indicates ringless type, NOT allowed
n - number of meter positions
sss - ampere rating per position

Single phase 125-200a Meter-Pak (all-in-one design) multi-position without bypass. Any catalog numbers that fit the following template are acceptable:

MPbn---

MPR... indicates ringless type, NOT allowed
b - bus ampere rating
n - number of meter positions
sss - ampere rating per position

Examples:

MP44125:

First 4 indicates 400 ampere bus

Second 4 indicates 4 meter positions 125 is amperage per meter position

MP86200:

8 indicates 800 ampere bus

6 indicates 6 meter positions

200 is amperage per meter position

Multi-Position with Bypass ("L" in cat. no. represents Lever Bypass) (5-tall vertical units are not allowed. 4-tall vertical units are allowed only if the final meter heights fall within acceptable limits. Check with local Alabama Power personnel to confirm.) Installation must provide unimpeded access to at least one side or the bottom of every meter compartment for the mounting of a high security lock.

Single phase 200a EZ Meter-Pak (modular) with bypass

EZML11n200, "n" represents number of positions

Single phase 200a or 225a EZ Meter-Pak (modular) three phase in, single phase 120/208v out with bypass

EZML31n200, "n" represents number of positions

EZML31n225, "n" represents number of positions

Single phase 320a EZ Meter-Pak (modular) multi-position with lever bypass.

EZML111400 EZML112400

Three phase 200a EZ Meter-Pak (modular) with bypass

EZML33n200, "n" represents number of positions

Three phase 225a EZ Meter-Pak (modular) multi-position with lever bypass. These sockets must have barrel locking provision installed in each meter position.

EZML331225, EZML332225

Three phase 320a EZ Meter-Pak (modular) multi-position with lever bypass.

EZML331400, EZML332400

Single phase 200a Meter-Pak (all-in-one design) with bypass

MPLbn200

"b" represents bus rating

"n" represents number of positions



Single Position w/out Bypass (Overhead or Underground services)

RC816F200S	RC200SFMG			
RC12L200S	RQC150SFMG			
QC816F200S	RQC200SFMG			
QC12L200S	RC2M200SFMG			

Single Position w/out Bypass (Overhead service only)

QC12L200C	RC12L200C	RC816D200C	RC3042M200PS	C2M200RB
QC2040M200C	RC2040M200C	RC816F200C	CM200S	RC200S
QC2442M200C	QC816F125C	UT-RS223A-SQD	CQRA200	RC2M200S
QC816F200C	SC2040M200F	SC3040M200RS	C200RB	

Note: Some Square D units may have "GP" appended to the end of the catalog number. This suffix indicates that the panel includes provision for connection of a generator. The presence or absence of "GP" does not affect the use of the panel for metering. However, "GP" is an indication that the customer may be installing a generator.

Single Position with Lever Bypass Mechanism

- CU12L400L** (400a socket for use with 320a meter)
- QU12L400CL** (400a socket for use with 320a meter)
- QU12L400SL** (400a socket for use with 320a meter)
- QUM400CL** (400a socket for use with 320a meter)
- QCD400SL** (400a socket for use with 320a meter)
- QC816D400SL** (400a socket for use with 320a meter)
- QC816D400CL** (400a socket for use with 320a meter)
- RC816D400SL** (400a socket for use with 320a meter)

Customer Owned Meter/Cabinet Support Pedestals

TechLine Mfg.:

- TLIS6TMS-GV-96-NBP-SMS-KIT** - 6/8/13 Terminal Meter Socket Pedestal – Direct Burial
- TLIS6TMS-GV-72-10-SMS-KIT** - 6/8/13 Terminal Meter Socket Pedestal – Plate Mount
- TLIS6TMS-GV-96-DL-NBP-SMS-KIT** - Single and Double Door Meter Cabinet Pedestal – Direct Burial
- TLIS6TMS-GV-72-10-DL-SMS-KIT** - Single and Double Door Meter Cabinet Pedestal – Plate Mount
- TLIS6TMS2GV-96-DL-NBP-DMS-KIT** - Dual Single and Double Door Meter Cabinet Pedestal – Direct Burial



APPENDIX A

Alabama Power Company has found installations of Square D/Schneider Electric (SqD) type EZM modular metering that present a problem with meter sealing. This occurs when meters are located immediately adjacent to and to the left of a deeper module such as a wiring module. The clearance is so small between the meter stack and the side of the deeper module that a meter sealing ring cannot be put into place after the meter is set. Figure 1 shows a typical installation. In order to get the sealing ring in place, APC must pull the meter, place the ring loosely around the meter base, and reset the meter and ring together.

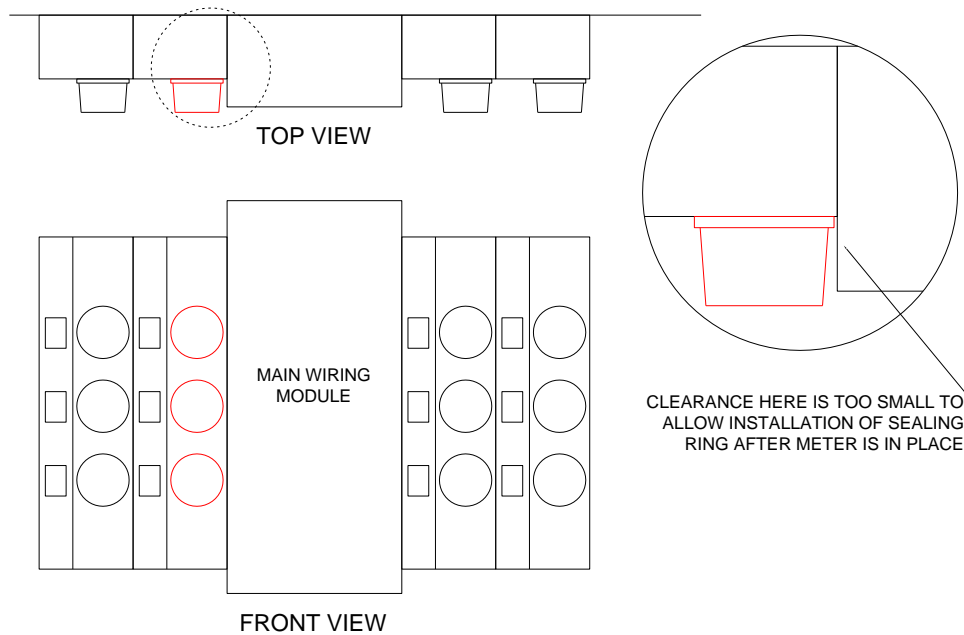


Figure 1

To avoid this situation, SqD offers an optional bus extension for its modular metering equipment. The use of one of this bus extension will eliminate our problem with meter rings. Therefore, this bus extension is required by APC any time all of the following conditions exist:

- SqD modular meter centers (EZM... models)
- Ring style covers. (Ringless style is not allowed in multi-position sockets such as this because of other problems with security sealing.)
- A meter stack module is located immediately to the left of a module extending farther from the wall than the meter stack. Typically, this will occur with the first meter stack to the left of a main wiring module. It should not occur when a meter stack is to the left of another meter stack.



Figure 2 shows a typical installation with the bus extension included.

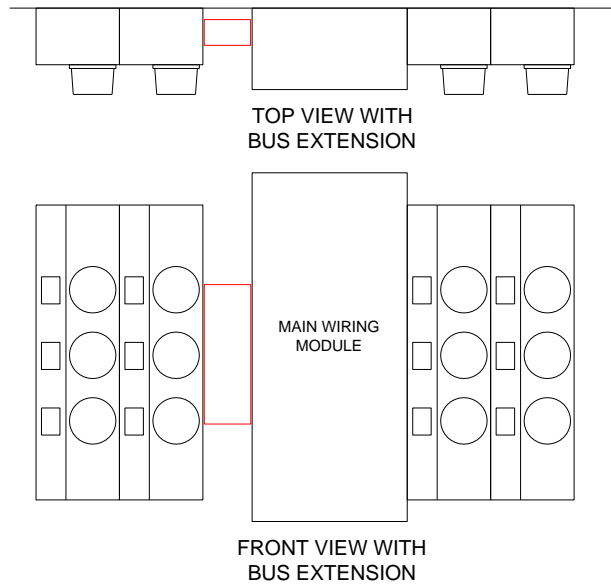


Figure 2

SqD will provide information and guidance to its sales personnel and customers to ensure that they are aware of APC's requirement for use of the bus extension. It is to APC's benefit for our personnel to be familiar with this requirement in case we encounter a new installation being proposed or built without the required bus extension.